

A creative alternative to Newton County's many "cookie cutter" apartment complexes, the Porterdale Mill Lofts are an adaptive new use of the Textile Mill and Cotton Warehouse facilities built over a century ago in Porterdale Georgia. Listed on the National Register of Historic Spaces, these buildings have been meticulously restored in compliance with the historic renovation standards of the Department of the Interior.

With 154 all-new loft-style apartment units, two spaces for restaurants and several retail spaces, the Porterdale Mill Lofts represent a new lifestyle for those who want more than just an apartment to live in – those who desire a unique community to enjoy life in. The lofts feature a beautiful swimming pool area, an on-site exercise facility and a riverside recreational deck area. A community area on the roof deck overlooks the rapids of the Yellow River as do many of the spacious one-, two- or three-bedroom loft-style units. Each residence in Porterdale Mill Lofts comes with attractive amenities such as fully-appointed kitchens and high-speed Internet and cable TV pre-wiring. The Porterdale Mill Lofts provides safe and secure restricted access resident parking in another revitalized structure next to the Mill Building and behind the Cotton Warehouse.

**PORTERDALE MILL LOFTS –
 A HISTORIC BUILDING, A NEW LIFE.**

LEASE YOURS TODAY!



A NEW KIND OF NEIGHBORHOOD.

LEASING OFFICE
 1109 MAIN STREET
 PORTERDALE, GEORGIA 30070

P (770) 786-8283 F (678) 342-8056

FEATURING:

- Spacious Loft-Style Units
- Spectacular River Views
- Units Also Available for Purchase 2012
- 25% Rent Credit Toward Purchase
- Mixed-use Community
- Antique Hardwood Floors
- High-Speed Internet and Cable Pre-Wire
- Huge Windows
- Custom Lighting
- Covered Garage Parking
- Exercise Facility & Beautiful Pool

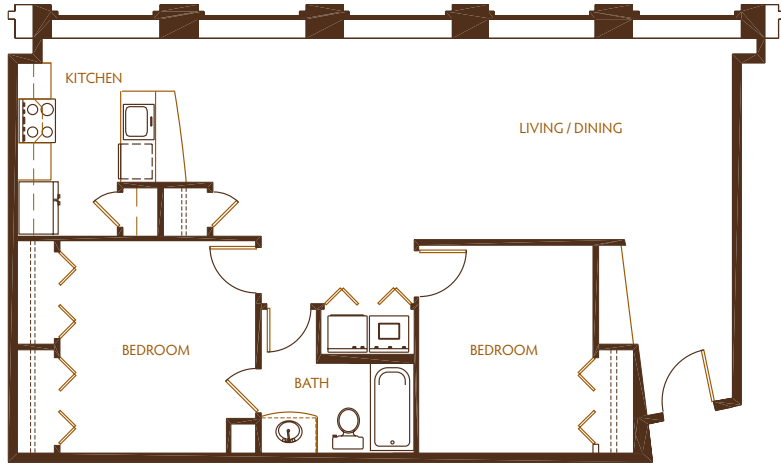
WWW.PORTERDALEMILL.COM

The following floorplans are a small sample of the spaces available at Porterdale Mill.
For a full list of loft apartments, please visit www.porterdailemill.com.

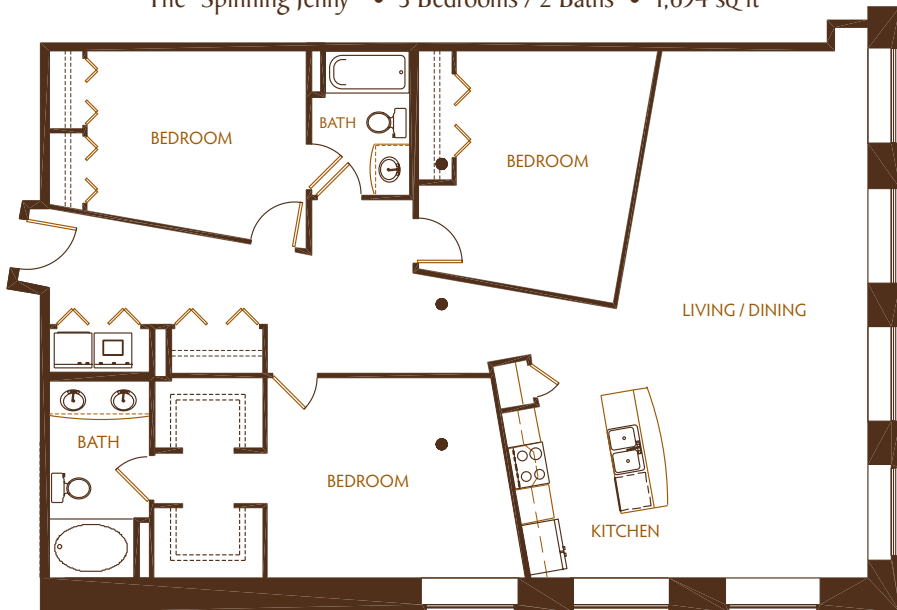
MILL BUILDING

RESIDENTIAL LOFTS

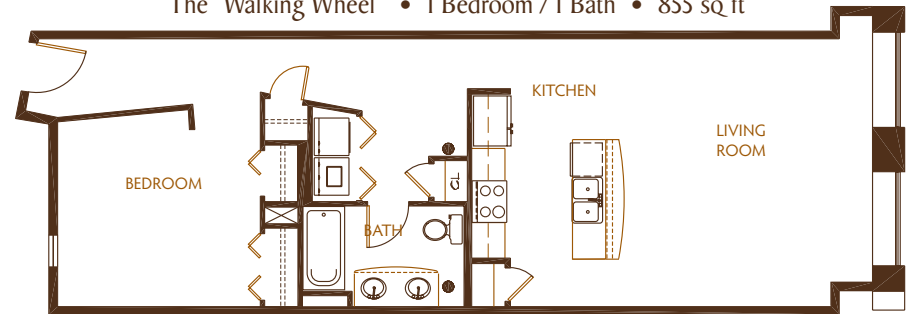
The "Cotton Winder" • 2 Bedrooms / 1 Bath • 1,052 sq ft



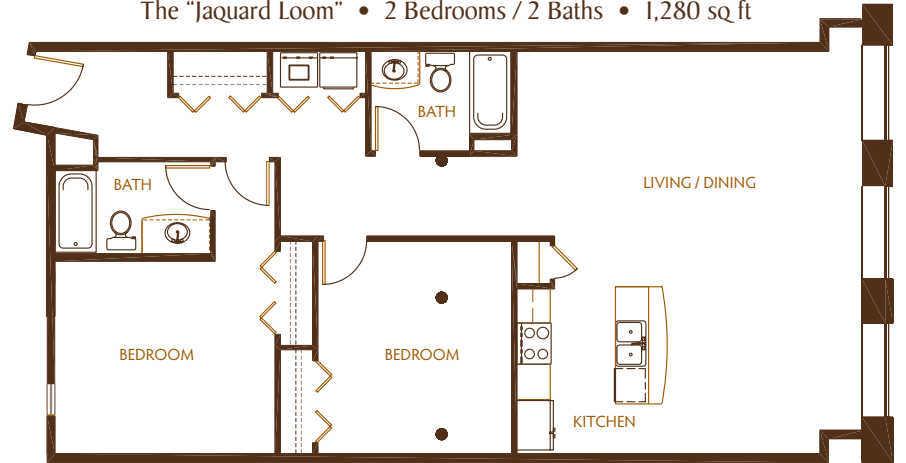
The "Spinning Jenny" • 3 Bedrooms / 2 Baths • 1,694 sq ft



The "Walking Wheel" • 1 Bedroom / 1 Bath • 855 sq ft



The "Jaquard Loom" • 2 Bedrooms / 2 Baths • 1,280 sq ft



COTTON WAREHOUSE

PREMIUM LIVE/WORK ENVIRONMENTS

The "Rover" • 1 Bedroom / 1 Bath • 1,489 sq ft

